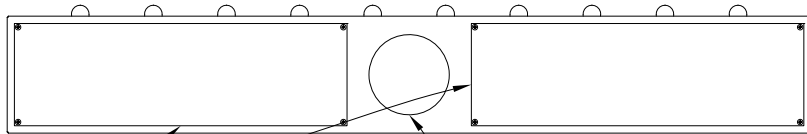
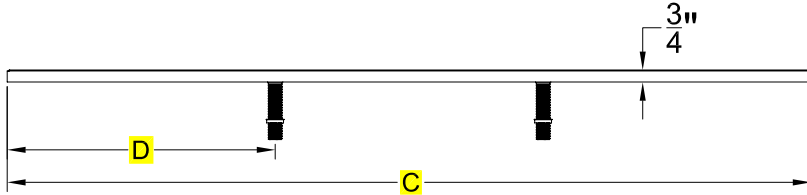
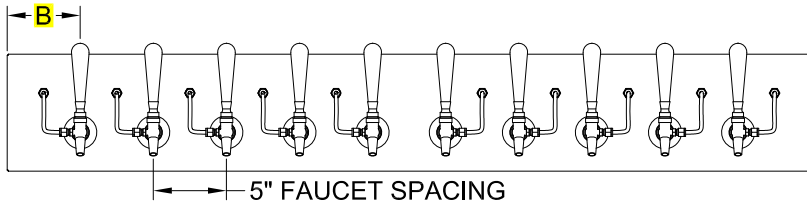
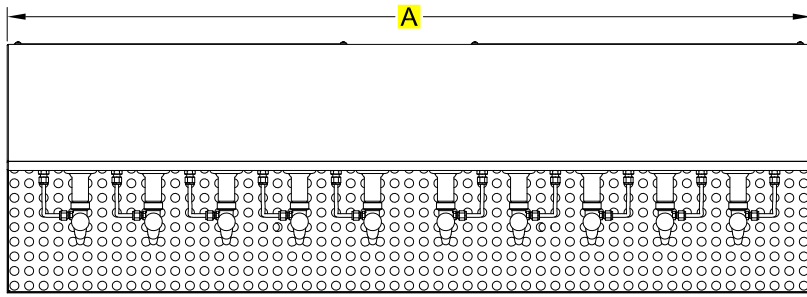


SPARTAN WALL MOUNT TOWER

PROJECT NAME: _____ ITEM #: _____

APPROVED BY: _____ DATE: _____



REAR ACCESS PANELS TRUNKLINE EXITS REAR CENTER

TOWER NOMENCLATURE:

SPARTAN - 10F - WM - SS

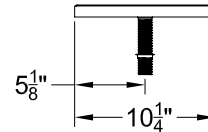
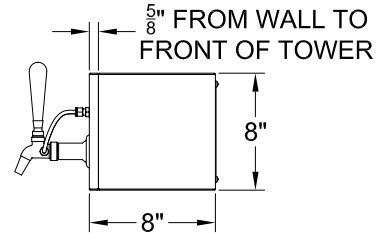
STYLE OF TOWER
NUMBER OF FAUCETS
MOUNT TYPE
TOWER FINISH

LEGEND: SS = #4 BRUSHED PC = POWDER COATED

TOWER MADE OF 304 STAINLESS STEEL

DISCLAIMERS:

- STS TECHNOLOGIES RESERVES THE RIGHT TO CHANGE MEASUREMENTS WITHOUT NOTICE.
- THIS DRAWING IS THE SOLE PROPERTY OF STS TECHNOLOGIES AND SHOULD NOT BE USED OR RECREATED WITHOUT WRITTEN CONSENT FROM STS TECHNOLOGIES.
- TAP HANDLES NOT INCLUDED.
- COLORATION IS A DIGITAL REPRESENTATION AND DOES NOT REFLECT THE ACTUAL COLOR.



• TOWER MUST HAVE 3' REAR ACCESS •

• PLEASE CHOOSE NUMBER OF FAUCETS BELOW •

▽	FAUCETS	A	B	C	D
<input type="checkbox"/>	4	35	10	35	17.5
<input type="checkbox"/>	6	35	5	35	17.5
• TWO DRAINS REQUIRED ON ALL DRIP PANS OVER 45" WIDE •					
<input type="checkbox"/>	8	55	10	55	18.33
<input type="checkbox"/>	10	55	5	55	18.33
<input type="checkbox"/>	12	75	10	75	25
<input type="checkbox"/>	14	75	5	75	25

• PLEASE CHOOSE ONE TOWER FINISH •

#4 BRUSHED-SS POWDER COAT-PC

• PLEASE CHOOSE ONE DRIP PAN FINISH •

#4 BRUSHED-SS #8 MIRROR-MF

ALL MEASUREMENTS ARE IN INCHES AND WEIGHTS IN POUNDS UNLESS OTHERWISE NOTED

• IF GLASS RINSER IS REQUIRED PLEASE CHOOSE LOCATION •

CENTER or OFFSET

